

GLOBAL PROJECTS

2023 Version

Global Projects Reference

PHONO

/01 Europe

Utility / Commercial / Residential

**5 MW**

Galten, Denmark

Project Type: Ground-mounted Project

Product Type: PS275P-20/U

Commission Date: July, 2012



Carbon-reduced (t) **5,982**



Tree-planted **4,367**



12.7 MW

Polch, Germany

Project Type: Ground-mounted Project
Product Type: PS235P-20/U & PS240P-20/U
Commission Date: July, 2014



Carbon-reduced (t) **15,195**



Tree-planted **11,092**



6.5 MW

Nauroth, Germany

Project Type: Ground-mounted Project

Product Type: PS230P-20/U

Commission Date: July, 2011



Carbon-reduced (t) **1,777**



Tree-planted **5,677**



3.1 MW

Solms, Germany

Project Type: Ground-mounted Project

Product Type: PS190M-24/F&PS195M-24/F

Commission Date: April, 2011



Carbon-reduced (t) **3,673**



Tree-planted **2,681**



2.2 MW

Grabsleben, Germany

Project Type: Ground-mounted Project

Product Type: PS240P-20/U

Commission Date: September, 2014



Carbon-reduced (t) **2,632**



Tree-planted **1,921**



6 MW

Trecasali, Italy

Project Type: Ground-mounted Project

Product Type: PS230P-20/U

Commission Date: July, 2011



Carbon-reduced (t) **7,482**



Tree-planted **4,267**



8 MW

Brussels, Belgium

Project Type: Commercial Roof-top Project

Product Type: PS330P-24/T

Commission Date: September, 2019



Carbon-reduced (t) **9,571**



Tree-planted **6,695**

**1 MW**

Marche, Italy

Project Type: Ground-mounted Project

Product Type: PS190P-20/U

Commission Date: July, 2010



Carbon-reduced (t) **1,060**



Tree-planted **711**



35 MW

Veprek, Czech Republic

Project Type: Ground-mounted Project

Product Type: PS185M-24/F & PS190M-24/F

Commission Date: November, 2010



Carbon-reduced (t) **41,874**



Tree-planted **30,568**

**7 MW**

Dnipropetrovsk Oblast, Ukraine

Project Type: Ground-mounted Project

Product Type: PS375M-24/T

Commission Date: July, 2019



Carbon-reduced (t) **7,452**



Tree-planted **5,440**



6.5 MW

Dnipropetrovsk Region, Ukraine

Project Type: Ground-mounted Project

Product Type: PS375M-24/T

Commission Date: November, 2019



Carbon-reduced (t) **7,452**



Tree-planted **5,400**

**3.6 MW**

Kaposszerdahely, Hungary

Project Type: Ground-mounted Project

Product Type: PS270M-20/U

Commission Date: July, 2019



Carbon-reduced (t) **4,128**



Tree-planted **3,013**



5.2 MW

Manfa, Hungary

Project Type: Ground-mounted Project

Product Type: PS270M-20/U

Commission Date: July, 2019



Carbon-reduced (t) **6,221**



Tree-planted **4,542**



4.7 MW

Isparta, Turkey

Project Type: Ground-mounted Project
Product Type: PS235P-20/U & PS240P-20/U
Commission Date: July, 2014



Carbon-reduced (t) **5,635**



Tree-planted **4,113**



2.2 MW

Hrazdan, Armenia

Project Type: Ground-mounted Project

Product Type: PS380MGF-24/TH

Commission Date: November, 2019



Carbon-reduced (t) **2,522**



Tree-planted **1,841**

**10 kW**

Sant Pere de Ribes, Barcelona, Spain

Project Type: Residential Roof-top Project

Product Type: PS450M4-24/TH

Commission Date: December, 2020



Carbon-reduced (t) **12**



Tree-planted **9**



Chios, Greece

Project Type: Ground-mounted Project

Product Type: PS240-20/U

Commission Date: July, 2015



Lancashire, UK

Project Type: Commercial Roof-top Project

Product Type: PS240P-20/U

Commission Date: July, 2011



Lancashire, UK

Project Type: Residential Roof-top Project

Product Type: PS240S-20/U

Commission Date: July, 2012



Yorkshire, UK

Project Type: Residential Roof-top Project

Product Type: PS240P-20/U

Commission Date: July, 2013



Mallorca, Spain

Project Type: Commercial Roof-top Project

Product Type: PS405M1H-24/TH

Commission Date: October, 2019



Yorkshire, UK

Project Type: Residential Roof-top Project

Product Type: PS250M-20/U

Commission Date: July, 2012

/02 America

Utility / Commercial / Residential



28 MW

Jekins, Georgia, USA

Project Type: Ground-mounted Project

Product Type: PS315P-24/T

Commission Date: November, 2015



Carbon-reduced **33,499**



Tree-planted **24,454**

**2 MW**

Pflugerville, Texas, USA

Project Type: Commercial Roof-top Project

Product Type: PS300P-24/T

Commission Date: November, 2019



Carbon-reduced (t) **2,321**



Tree-planted **1,694**



14 MW

North Carolina, USA

Project Type: Ground-mounted Project

Product Type: PS310P-24/T

Commission Date: September, 2016



Carbon-reduced (t) **2,240**



Tree-planted **1,680**

**116 kW**

Heritage Village, Southbury CT, USA

Project Type: Commercial Roof-top Project

Product Type: PS380MH-24/TH

Commission Date: August, 2020



Carbon-reduced (t) **136**



Tree-planted **100**



530 kW

100 King Philip Drive West Hartford, CT 06117, USA

Project Type: Commercial Roof-top Project

Product Type: PS385MH-24/TH

Commission Date: November, 2020



Carbon-reduced (t) **624**



Tree-planted **455**



Bakersfield, California, USA

Project Type: Commercial Roof-top Project

Product Type: PS310M-24/T

Commission Date: July, 2016



Lake Elsinore, California, USA

Project Type: Commercial Roof-top Project

Product Type: PS310P-24/T

Commission Date: August, 2016

**353 kW**

Palm Springs, California, USA

Project Type: Ground-mounted Project

Product Type: PS240M-20/U

Commission Date: July, 2012

**632 kW**

California, USA

Project Type: Residential Roof-top Project

Product Type: PS240P-20/U

Commission Date: August, 2012



Tennessee, USA

Project Type: Ground-mounted Project

Product Type: PS385MH-24/TH

Commission Date: August, 2020





36 MW

Various Sites, Las Turcas, Pifio, Chile

Project Type: Ground-mounted Project
Product Type: PS320P-24/T&PS325P-24/T
Commission Date: November, 2019



Carbon-reduced (t) **43,070**



Tree-planted **31,440**



Rio Grande do Sul, Brazil

Project Type: Residential Roof-top Project

Product Type: PS310P-24/T

Commission Date: July, 2019



Rio Grande do Sul, Brazil

Project Type: Ground-mounted Project

Product Type: PS260P-20/U

Commission Date: July, 2013



Santa Maria – Rio Grande do Sul, Brazil

Project Type: Residential Roof-top Project

Product Type: PS310P-24/T

Commission Date: July, 2019



Vacaria, Brazil

Project Type: Residential Roof-top Project

Product Type: PS310M-24/T

Commission Date: July, 2019



25 kW

Rio Grande do Sul, Brazil

Project Type: Residential Roof-top Project

Product Type: PS325P-24/T

Commission Date: July, 2019



60 kW

Nova Alvorada, Brazil

Project Type: Residential Roof-top Project

Product Type: PS260P-20/U

Commission Date: July, 2016

**112 kW****Vacaria, Brazil**

Project Type: Commercial Roof-top Project

Product Type: PS310P-24/T

Commission Date: July, 2019

**252 kW****Highlands, US**

Project Type: Commercial Roof-top Project

Product Type: PS260P-20/U

Commission Date: July, 2016

/03 Asia

Utility / Commercial / Residential



2.5 MW

Okayama-ken, Japan

Project Type: Ground-mounted Project

Product Type: PS325P-24/T

Commission Date: November, 2015



Carbon-reduced (t) **2,992**



Tree-planted **2,183**



20 MW

Tsukuba, Japan

Project Type: Ground-mounted Project

Product Type: PS265P-20/U

Commission Date: November, 2015



Carbon-reduced (t) **23,928**



Tree-planted **17,467**



4.5 MW

Chiba Prefecture, Japan

Project Type: Ground-mounted Project

Product Type: PS265P-20/U

Commission Date: November, 2014



Carbon-reduced (t) **5,383**



Tree-planted **3,930**

**2 MW****Kangwon , Korea**

Project Type: Ground-mounted Project

Product Type: PS400M1H-24/TH

Commission Date: April, 2020

**997.5 kW****Yeosan , Korea**

Project Type: Ground-mounted Project

Product Type: PS375MH-24/TH

Commission Date: November, 2019



1.06 MW

Kangwon , Korea

Project Type: Ground-mounted Project

Product Type: PS380MH-24/TH & PS385MH-24/TH

Commission Date: November, 2019



Carbon-reduced (t) **1,276**



Tree-planted **931**

**500 kW**

Kangwon , Korea

Project Type: Ground-mounted Project

Product Type: PS400M1H-24/TH

Commission Date: December, 2020



Carbon-reduced (t) **560**



Tree-planted **410**



18 MW

Harappa, Pakistan

Project Type: Ground-mounted Project

Product Type: PS310P-24/T

Commission Date: November, 2019



Carbon-reduced (t) **21,535**



Tree-planted **15,720**



1.25 MW

Punjab, Pakistan

Project Type: Ground-mounted Project

Product Type: PS250P-20/U

Commission Date: November, 2014



Carbon-reduced (t) **1,496**



Tree-planted **1,091**



80 MW

Zhejiang Province, China

Project Type: Fishery-Solar Complementary Floating Project

Product Type: PS310P-24/T

Commission Date: November, 2018



Carbon-reduced (t) **95,744**



Tree-planted **69,869**

**50 MW**

Jiangsu Province, China

Project Type: Wind-Solar Complementary Ground-mounted Project

Product Type: PS240P-20/U

Commission Date: November, 2013



Carbon-reduced (t) **58,823**



Tree-planted **42,940**



30 MW

Zhejiang Province, China

Project Type: Ground-mounted Project

Product Type: PS310P-24/T

Commission Date: November, 2018



Carbon-reduced (t) **35,904**



Tree-planted **15,720**

**1 MW**

Jeonbuk , Korea

Project Type: Ground-mounted Project

Product Type: PS405M1H-24TH

Commission Date: July, 2020



Carbon-reduced (t) **1,060**



Tree-planted **711**



0.4 MW

Chungnam , Korea

Project Type: Ground-mounted Project

Product Type: PS385MH-24/TH

Commission Date: May, 2020



Carbon-reduced (t) **470.6**



Tree-planted **343.5**



157.2kW

Jeonbuk , Korea

Project Type: Ground-mounted Project

Product Type: PS400M1H-24TH

Commission Date: October, 2020



Carbon-reduced (t) **185**



Tree-planted **135**



172kW

Chungnam , Korea

Project Type: Ground-mounted Project

Product Type: PS450M5GFH-24/TH

Commission Date: May, 2021



Carbon-reduced (t) **202**



Tree-planted **148**



130kW

Chungnam , Korea

Project Type: Ground-mounted Project

Product Type: PS450M5GFH-24/TH

Commission Date: February, 2021



Carbon-reduced (t) **152**



Tree-planted **111**



Chungnam , Korea

Project Type: Ground-mounted Project

Product Type: PS450M5GFH-24/TH

Commission Date: June, 2021



Gyeonggi , Korea

Project Type: Ground-mounted Project

Product Type: PS450M5GFH-24/TH

Commission Date: June, 2021



700kW

Chungnam , Korea

Project Type: Ground-mounted Project

Product Type: PS450M5GFH-24/TH

Commission Date: June, 2021



Carbon-reduced (t) **823.5**



Tree-planted **601**



146 kW

Hokkaido, Japan

Project Type: Ground-mounted Project

Product Type: PS255P-20UM

Commission Date: April, 2013



300 kW

Kagoshima-ken, Japan

Project Type: Commercial Roof-top Project

Product Type: PS260P-20/U

Commission Date: July, 2015



610 kW

Hokkaido, Japan

Project Type: Ground-mounted Project

Product Type: PS255P-20UM

Commission Date: April, 2014



50 kW

Sakudairashi Naganoken, Japan

Project Type: Commercial Roof-top Project

Product Type: PS260P-20/U

Commission Date: July, 2014

**660 kW****Chungnam , Korea**

Project Type: Ground-mounted Project

Product Type: PS380MH-24/TH

Commission Date: April, 2014

**789 kW****Yeoncheon , Korea**

Project Type: Commercial Roof-top Project

Product Type: PS385MH-24/TH

Commission Date: July, 2014

**1.5MW****Baddi , India**

Project Type: Commercial Roof-top Project

Product Type: PS325P-24/T

Commission Date: March, 2019

**4 MW****Punjab , India**

Project Type: Commercial Roof-top Project

Product Type: PS325P-24/T

Commission Date: December, 2018

**40kW****Haryana, India**

Project Type: Commercial Roof-top Project

Product Type: PS325P-24/T

Commission Date: July, 2018

**300kW****Punjab , India**

Project Type: Commercial Roof-top Project

Product Type: PS325P-24/T

Commission Date: September, 2018



Chhattisgarh, India

Project Type: Commercial Roof-top Project

Product Type: PS330P-24/T

Commission Date: January, 2020





Hefei Province, China

Project Type: Commercial Roof-top Project

Product Type: PS270MH-20/U

Commission Date: December, 2014



Jiangsu Province, China

Project Type: Commercial Roof-top Project

Product Type: PS270MH-24/TH

Commission Date: May, 2015

/04 Oceania

Utility / Commercial / Residential

**100 kW**

Bundaberg, QSD, Australia

Project Type: Commercial Roof-top Project

Product Type: PS250P-20/U

Commission Date: November, 2014



Carbon-reduced (t) **120**



Tree-planted **87**

**123 kW**

Eastern Creek, NSW, Australia

Project Type: Commercial Roof-top Project

Product Type: PS275P-20/U

Commission Date: June, 2018



Carbon-reduced (t) **147**



Tree-planted **107**



514 kW

Various sites in Chinchilla, Queensland, Australia

Project Type: Commercial Roof-top Project

Product Type: PS270P-20/U

Commission Date: June, 2016



Carbon-reduced (t) **564**



Tree-planted **412**



1.02 MW

North Victoria, Australia

Project Type: Ground Mounted Project

Product Type: PS380MH-24/TH

Commission Date: April, 2020



Carbon-reduced (t) **1169.5**



Tree-planted **854**

**3.8 MW**

Northern Victoria, Australia

Project Type: Commercial Roof-top Project

Product Type: PS380MH-24/TH

Commission Date: February, 2020



Carbon-reduced (t) **4356.9**



Tree-planted **3180**

**26 kW****QSD, Australia**

Project Type: Commercial Roof-top Project

Product Type: PS250P-20/U

Commission Date: July, 2014

**33 kW****Mariners Peninsula, Australia**

Project Type: Commercial Roof-top Project

Product Type: PS250P-20/U

Commission Date: July, 2014



144 kW

North Lakes, Queensland, Australia

Project Type: Commercial Roof-top Project

Product Type: PS260P-20/U

Commission Date: December, 2014



Carbon-reduced (t) **169.4**



Tree-planted **124**



638 kW

Western Downs Region, Queensland, Australia

Project Type: Commercial Roof-top Project

Product Type: PS270P-20/U

Commission Date: December, 2017





1.5 MW

Piangil, Victoria, Australia

Project Type: Commercial Roof-top Project

Product Type: PS380MH-24/TH

Commission Date: September, 2019





73kW

Ewingsdale, New South Wales, Australia

Project Type: Ground Mounted Project

Product Type: PS380MH-24/TH

Commission Date: September, 2019



Carbon-reduced (t) **85.9**



Tree-planted **63**

**96kW**

Mackay, Queensland, Australia

Project Type: Commercial Roof-top Project

Product Type: PS380MH-24/TH

Commission Date: September, 2019



Carbon-reduced (t) **112.9**



Tree-planted **82**

**375kW**

Maranoa Region, Queensland, Australia

Project Type: Commercial Roof-top Project

Product Type: PS330M1H-20/UH / PS400M1H-24/TH

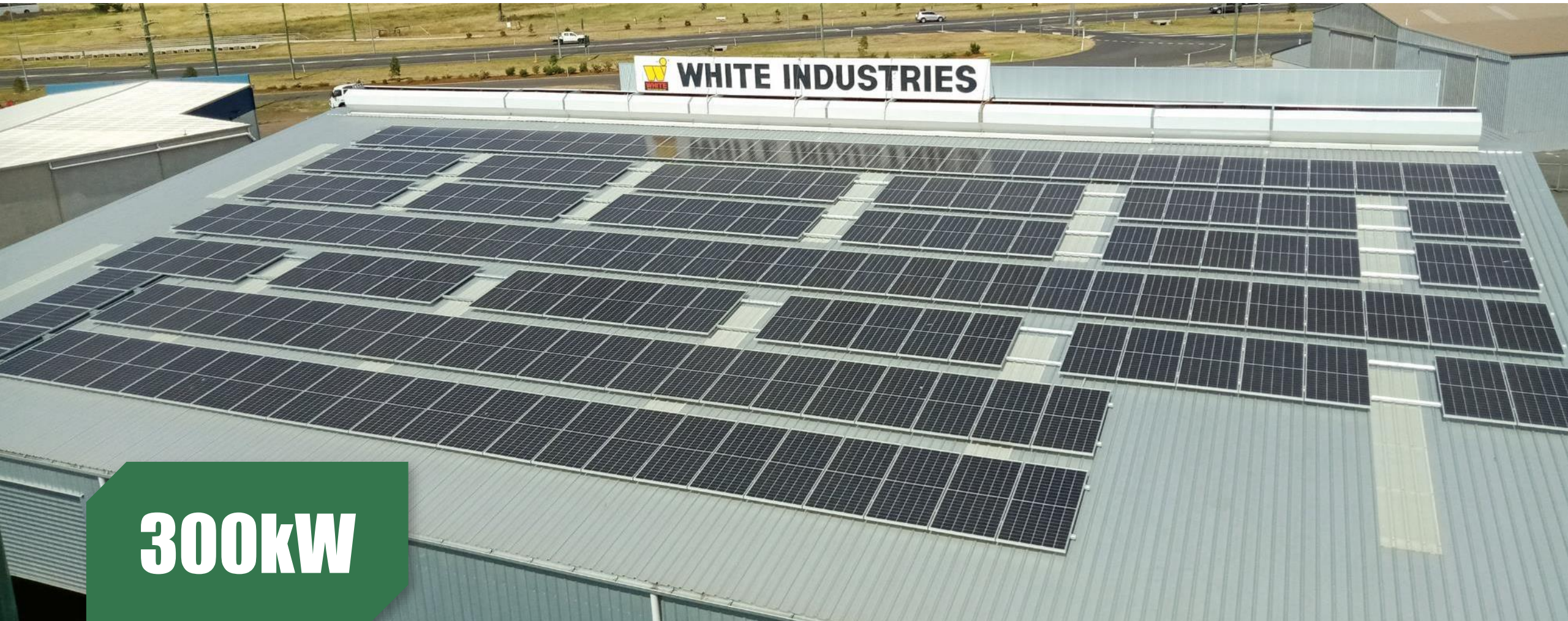
Commission Date: September, 2020



Carbon-reduced (t) **441.2**



Tree-planted **322**

**300kW**

Dalby, Queensland, Australia

Project Type: Commercial Roof-top Project

Product Type: PS400M1H-24TH

Commission Date: September, 2020



Carbon-reduced (t) **352.9**



Tree-planted **258**

The background is an abstract geometric pattern composed of numerous triangles in various shades of green and blue. The colors transition from a deep teal on the left to a bright lime green on the right, with the triangles of varying sizes creating a dynamic, low-poly effect.

Thank You!

SHARE THE SUN, POWER THE FUTURE

PHONO